

90 Livingston Ave.

New Brunswick NJ

Leasing Now!

“Elegantly designed High-tech office suites”

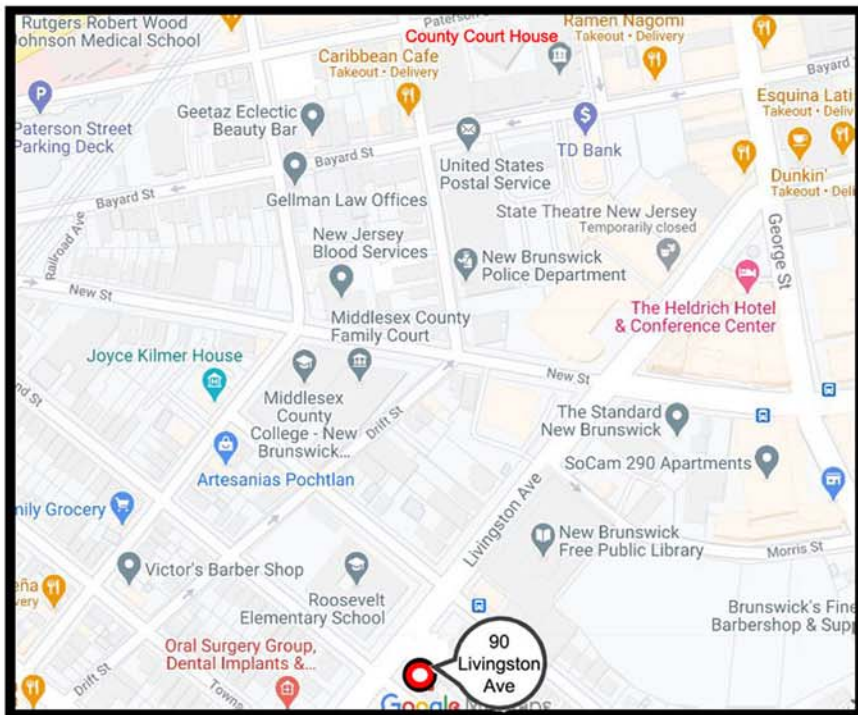
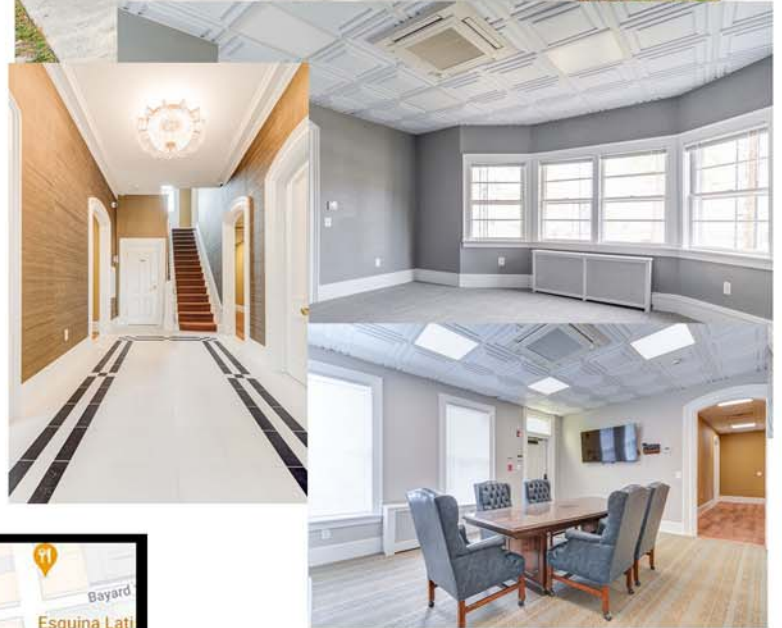
This Italianate design building built in 1875 is located in the Historic District of New Brunswick just a few blocks from the center of town. The beautifully renovated interior utilizes modern high tech features. The building is ADA compliant with the first floor wheel chair accessible. Each floor includes kitchenette and bathrooms in the common area. Off street parking is available in the rear lot or on the street. Located close to Public transportation, government offices, and hospitals. This building is a prime office location for your business.

Other Amenities:

- Ductless HVAC units
- Security system with CCTV
- Conference Room with AV
- Wheelchair lift
- Basement storage available
- All utilities included
- Maintenance & janitorial included
- Giga speed internet

Leasable Space:

Building: 4507 sf, 3 Floors, 11 suites
1st Floor - 3 Suites, 322 sf, 335 sf, 343 sf
2nd Floor - 5 Suites, 298 sf, 248 sf, 245 sf, 249 sf, 358 sf
3rd Floor - 3 Suites, 284 sf, 286 sf, 487 sf



Close Proximity:

- County Court House
- Rutgers University
- Train Station
- Bus Route
- Restaurants
- State Theater
- Fire Department
- Police Department
- RWJ Hospital
- St Peters Hospital

Highways:

- Route 287
- Route 27
- Route 18
- Route 1
- NJ Turnpike

90 Livingston Ave LLC

90 Livingston Avenue
New Brunswick, NJ 08901
Gerry O'Brien (732) 259-5408
GerryObrien52@gmail.com